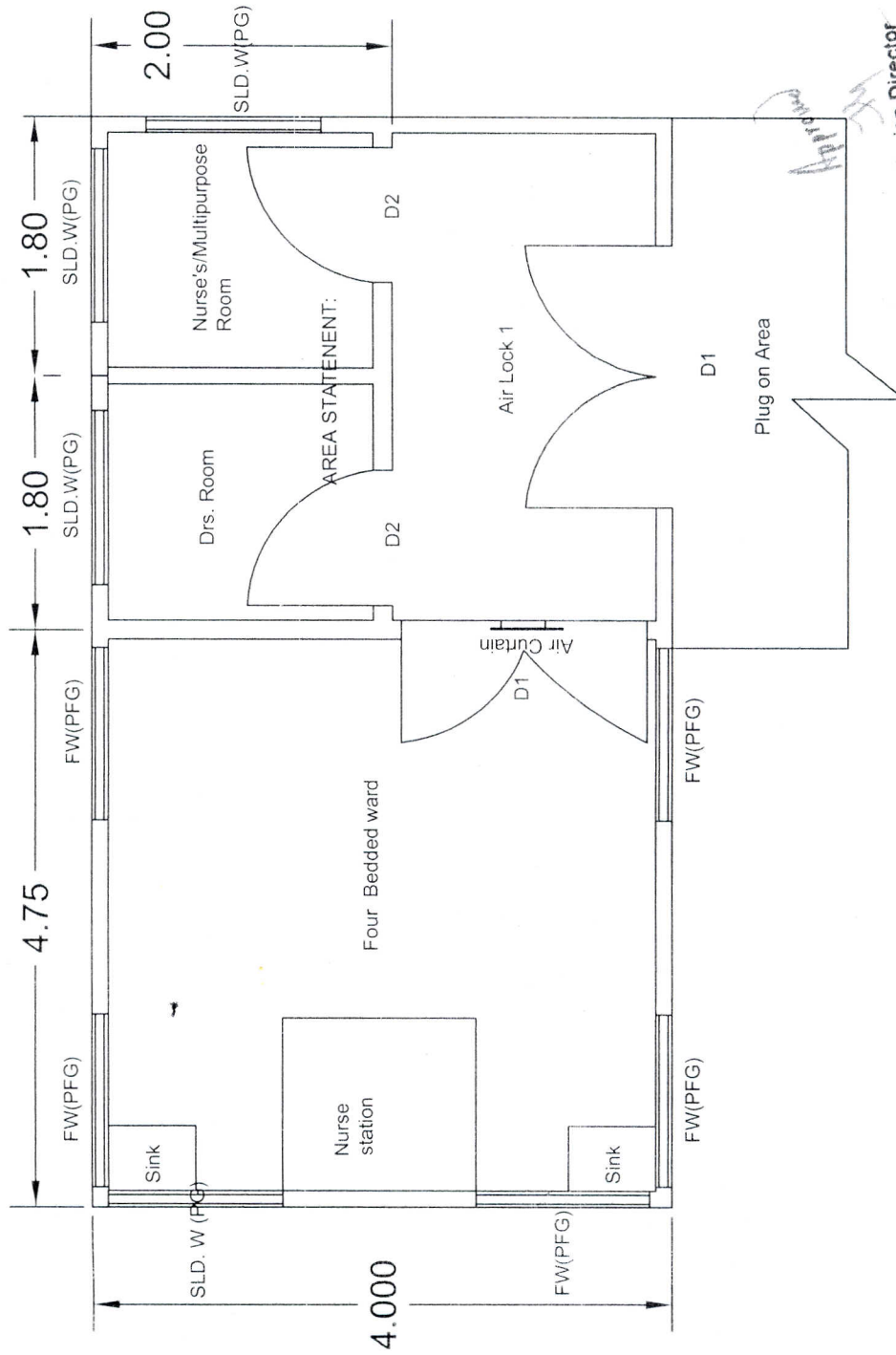


42



**MODEL PLAN OF PROPOSED STABILIZATION UNIT
FOUR BEDDED
[2 STORIED PROVISION - 1ST FLOOR ASSAM TYPE]**

Mission Director
National Rural Health Mission
16-Janapath, Khanapara, Guwahati-22

Consultant (Civil Works)
NRHM, Khanapara,
Guwahati-22

SCHEDULE FOR DOORS & WINDOWS

D1=1.8X2.1m(Alm. Partly
Prelaminated/ Frosted Glass)
D2 = 1.00X2.10m (Alm.
Prelaminated/ Frosted Glass)
FW(PFG)=1.2x1.35m(Fixed
window with plain frosted glass)
SLD.W(PG)=1.20X1.35m(Sliding
window with plain glass)
Security Grills are to be provided at all
windows Externally.
C.G. Collapsible to be provided at the
Plug on area

All dimension Are in Metre
Scale: N.T.S

AREA STATEMENT:
Area of Ward=19.00 Sqm. (204.44 Sqft.)
Area of Drs.room=3.60Sqm.(38.75Sqft.)
Area of Nurses room/
Multi purpose room=3.60Sqm.(38.75Sqft.)
Area of Air Lock room=7.200Sqm.(77.47Sqft.)
Area of the STABILIZATION UNIT :
33.40Sqm.(359.38Sqft.)

**Model Plan of Proposed Four
Bedded Stabilization Unit**

| | | | |
|-------------|-------------------|------------|----------|
| Approved by | Counter Signed by | Checked by | Dealt by |
| | | | |

Assistant Engineer
Rural Health Mission, As
Khanapara, Guwahati-22

Supervising Engineer
National Rural Health Mission
Assam, Guwahati-22